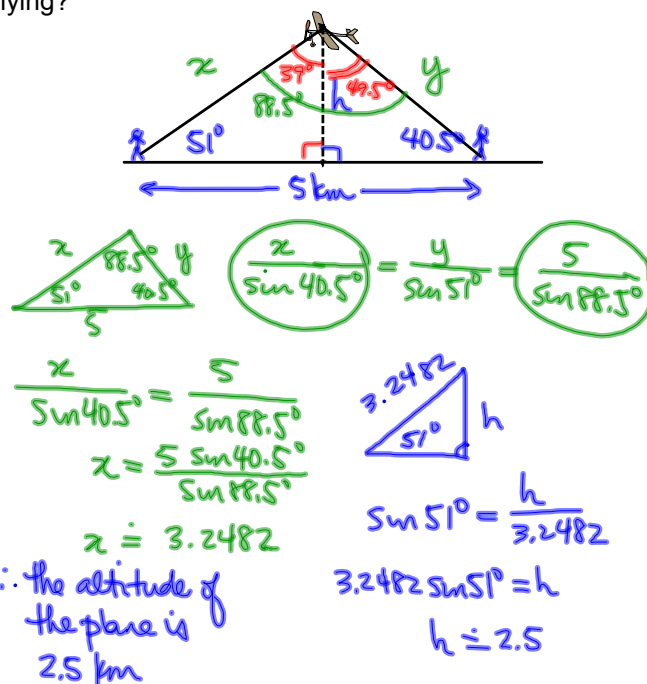


## Applications of Trigonometry

June 1/2010

Ex.1. Two observers who are 5 km apart simultaneously sight a small airplane flying between them. One observer measures a  $51^\circ$  angle of inclination, while the other measures a  $40.5^\circ$  inclination angle. At what altitude is the airplane flying?

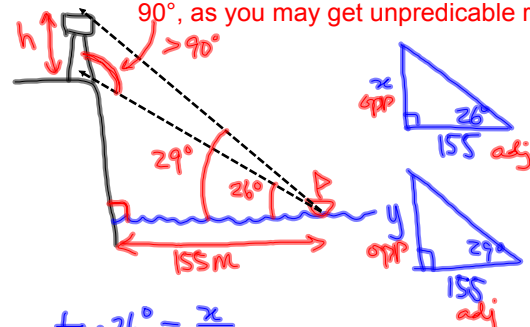


May 22 - 4:46 PM

## Ex.2

A lighthouse stands on a cliff over the ocean. From a point 155 m offshore, the angle of elevation of the foot of the lighthouse is  $26^\circ$ , and the angle of elevation of the top of the lighthouse is  $29^\circ$ . What is the height of the lighthouse?

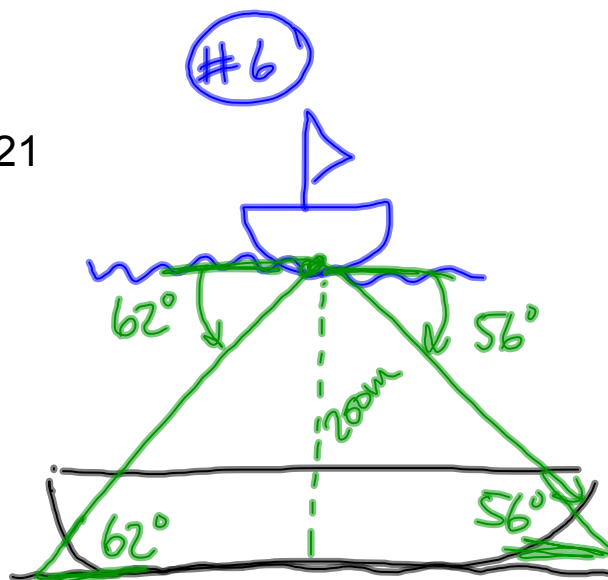
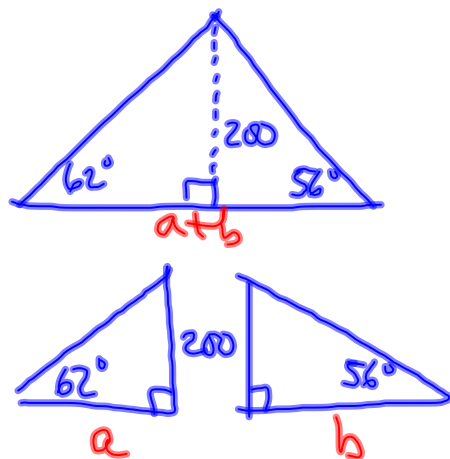
warning: do not solve triangles with angles greater than  $90^\circ$ , as you may get unpredictable results



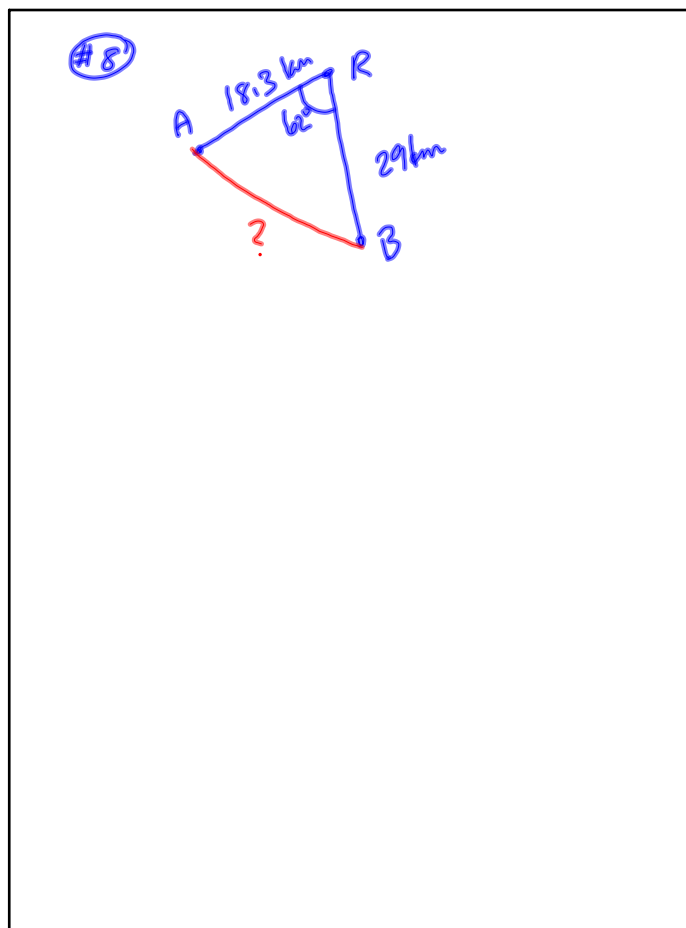
May 16-8:12 AM

Assigned Work:

p.575 # 6, 8, 9, 15, 20, 21



May 23 - 1:23 PM



Jun 1-10:11 AM