

## Graphs of Reciprocal Trigonometric Functions

### Handout: Graphs of Reciprocal Trig Functions

Recall:

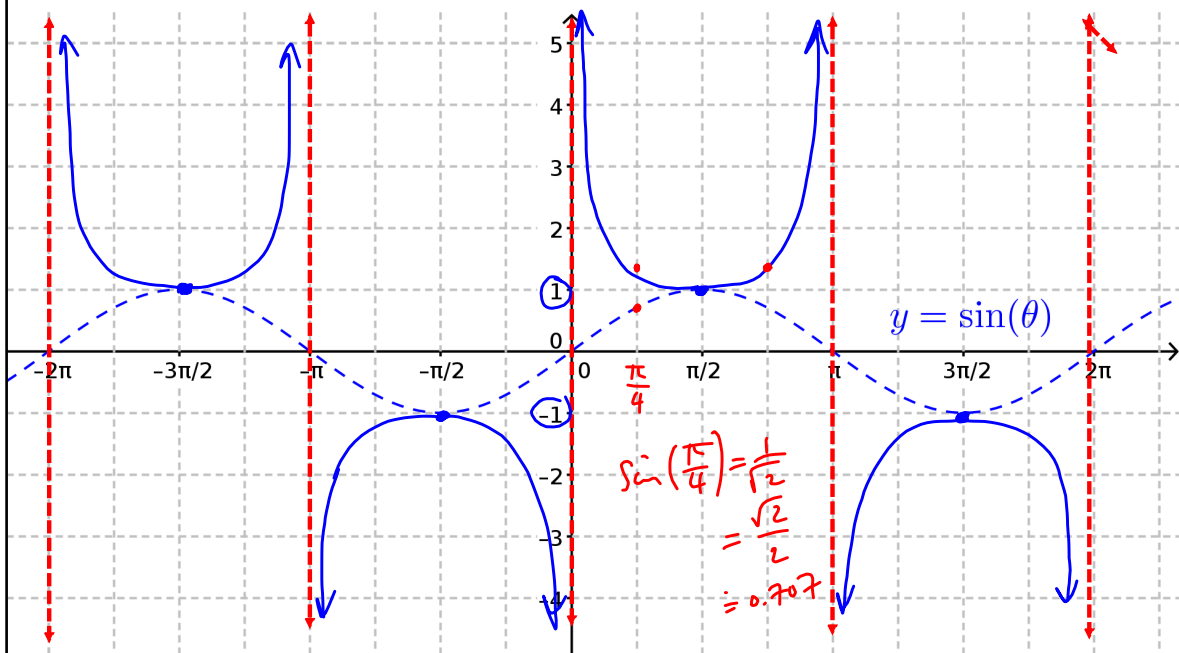
$$\csc \theta = \frac{1}{\sin \theta} = \frac{r}{y} \quad \sin \theta = \frac{y}{r}$$

$$\sec \theta = \frac{1}{\cos \theta} = \frac{r}{x}$$

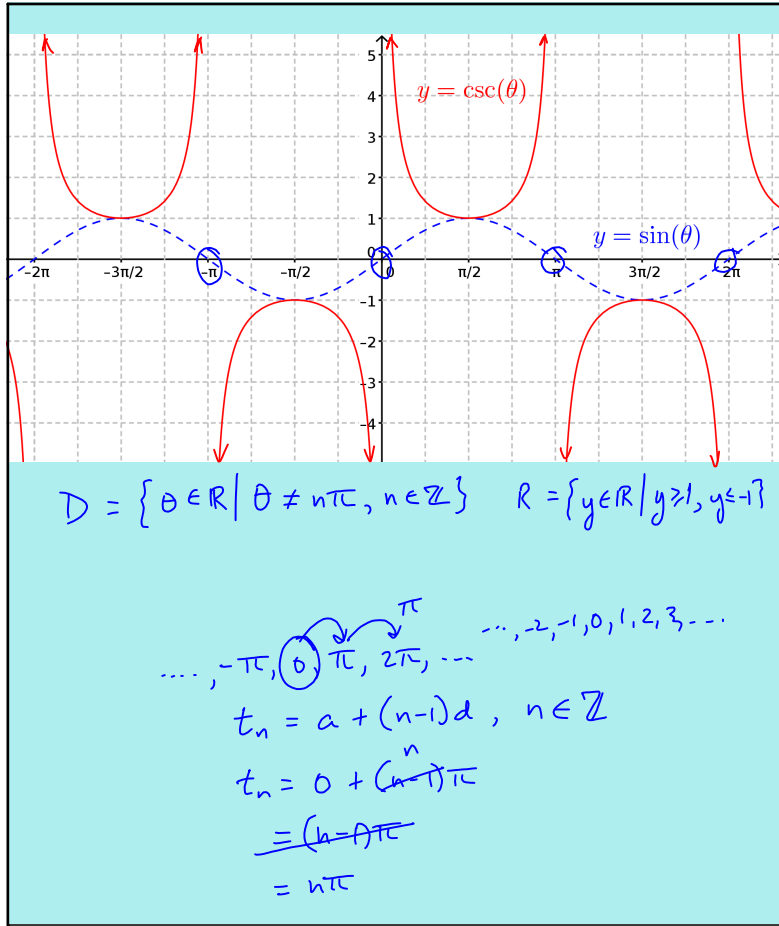
$$\cot \theta = \frac{1}{\tan \theta} = \frac{x}{y}$$

May 17-9:17 AM

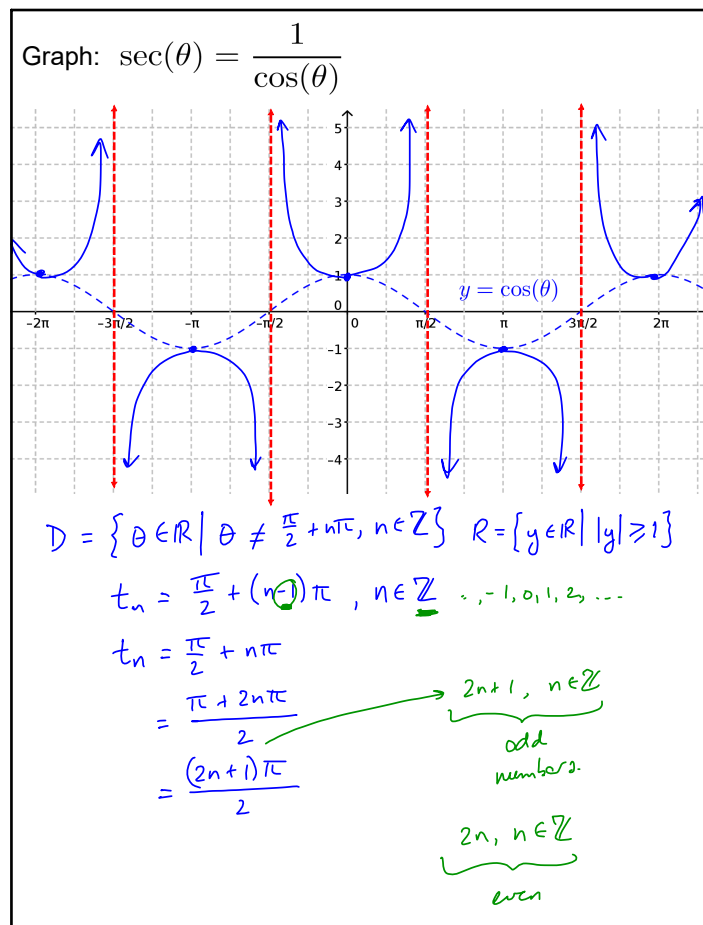
Graph:  $\csc(\theta) = \frac{1}{\sin(\theta)}$   $P\left(\frac{\pi}{2}, 1\right) \xrightarrow{\frac{1}{f(x)}} \left(\frac{\pi}{2}, \frac{1}{1}\right)$



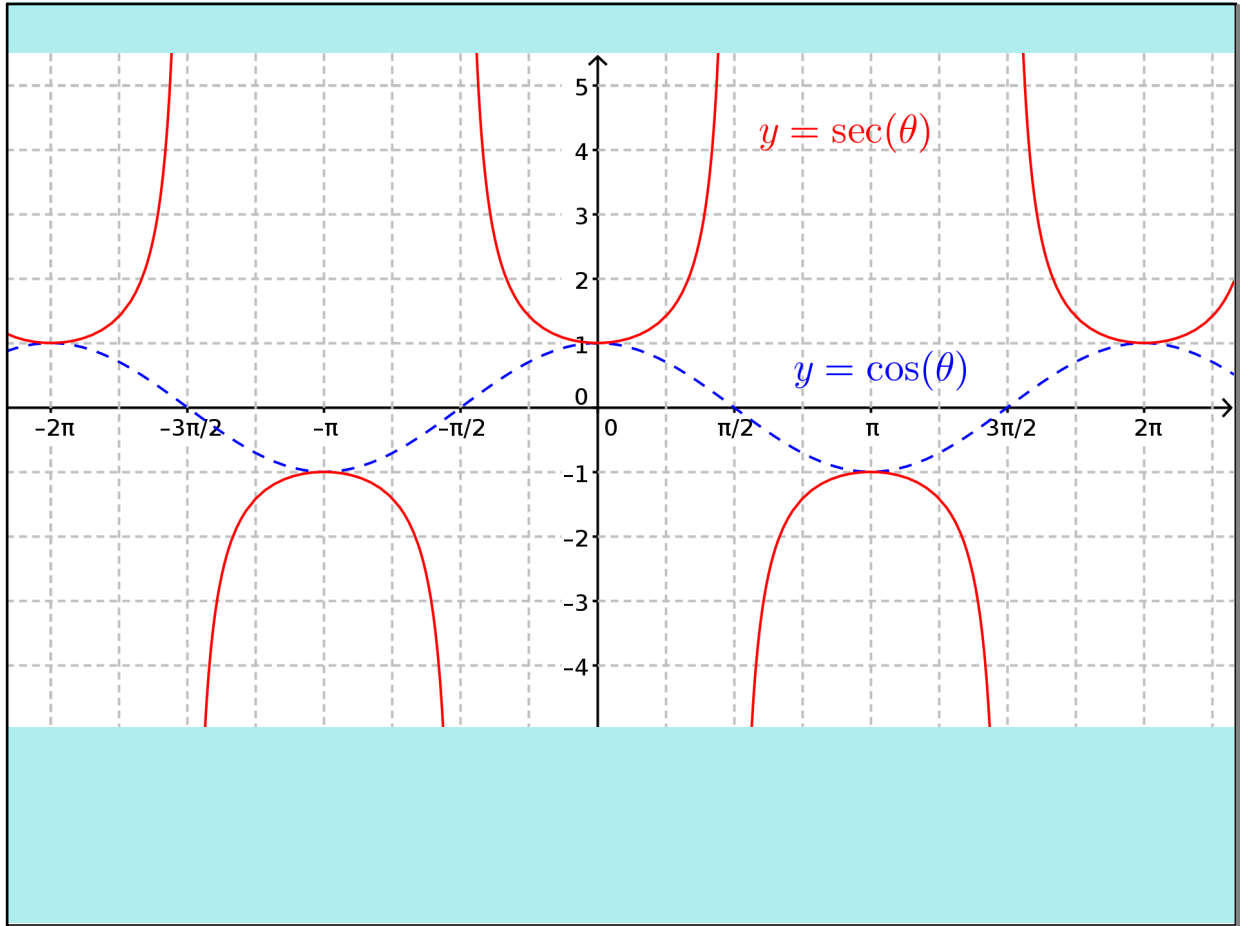
May 16-9:08 AM



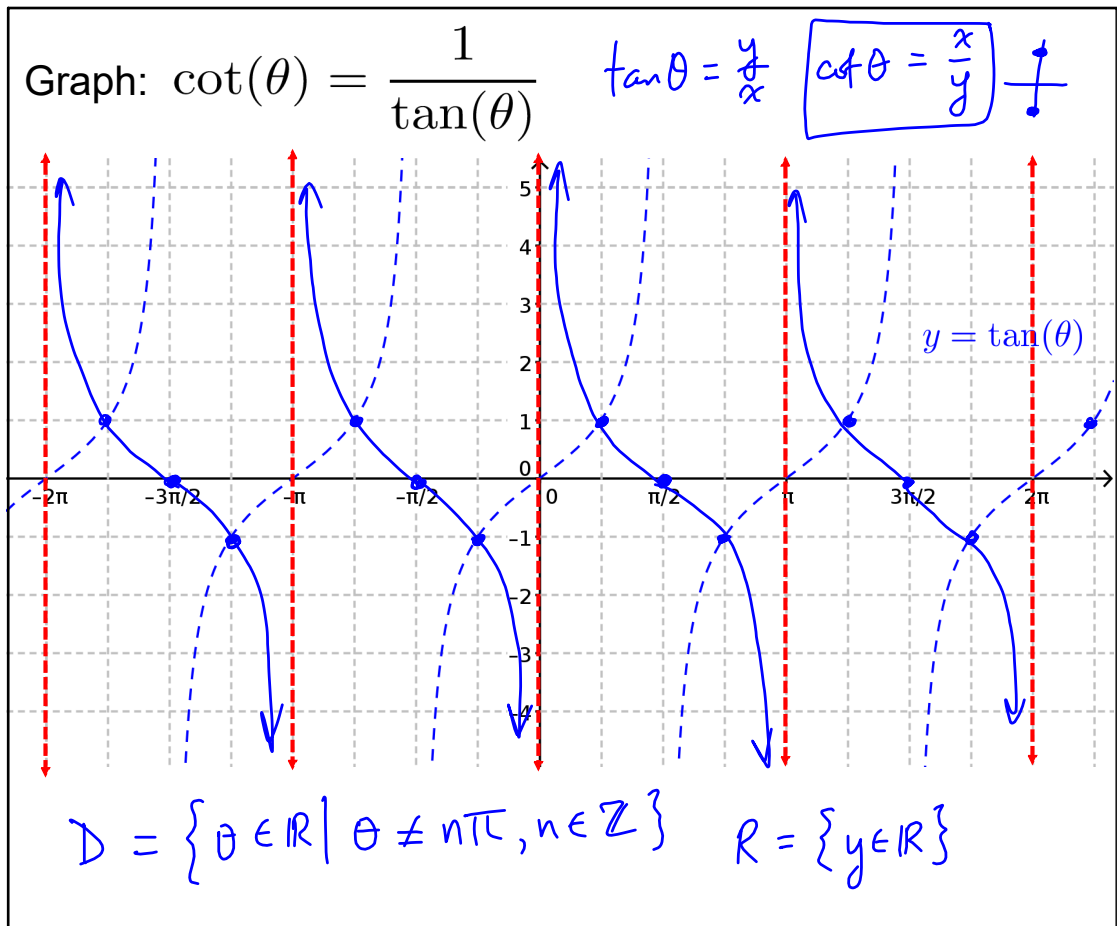
Oct 30-9:25 PM



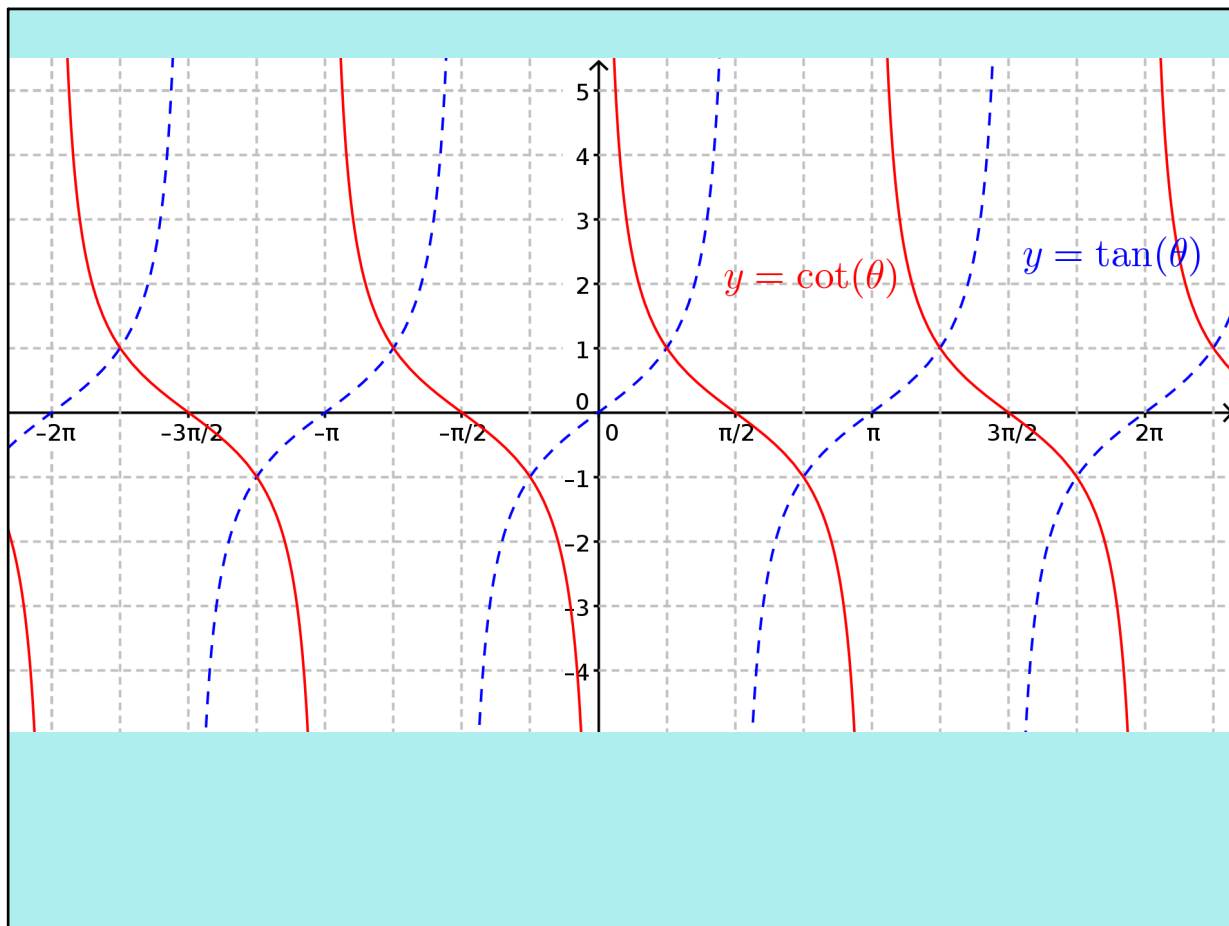
May 16-9:08 AM



May 16-9:08 AM



May 16-9:08 AM

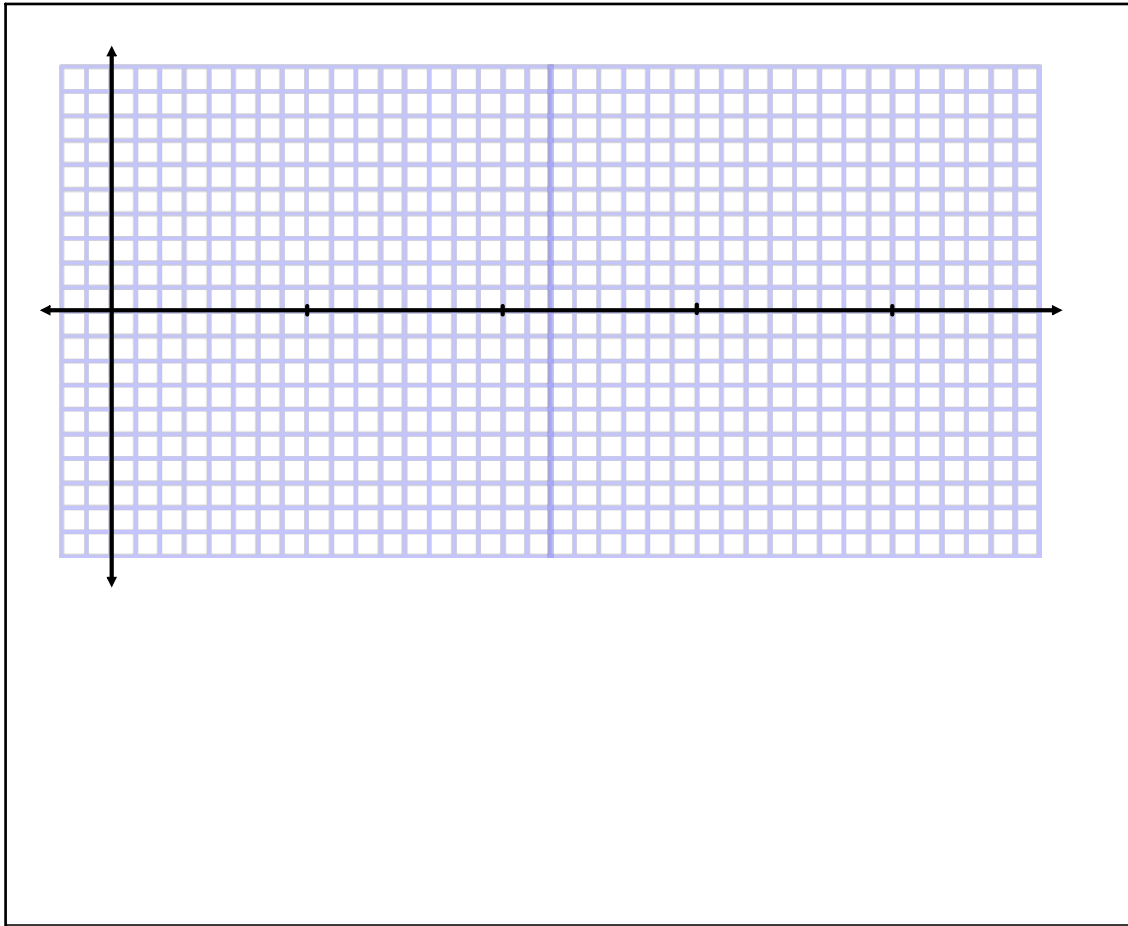


May 16-9:08 AM

Assigned Work:

p.353 # 1, 2, 3, 6, 7

May 22-8:28 AM



Oct 31-10:13 AM