

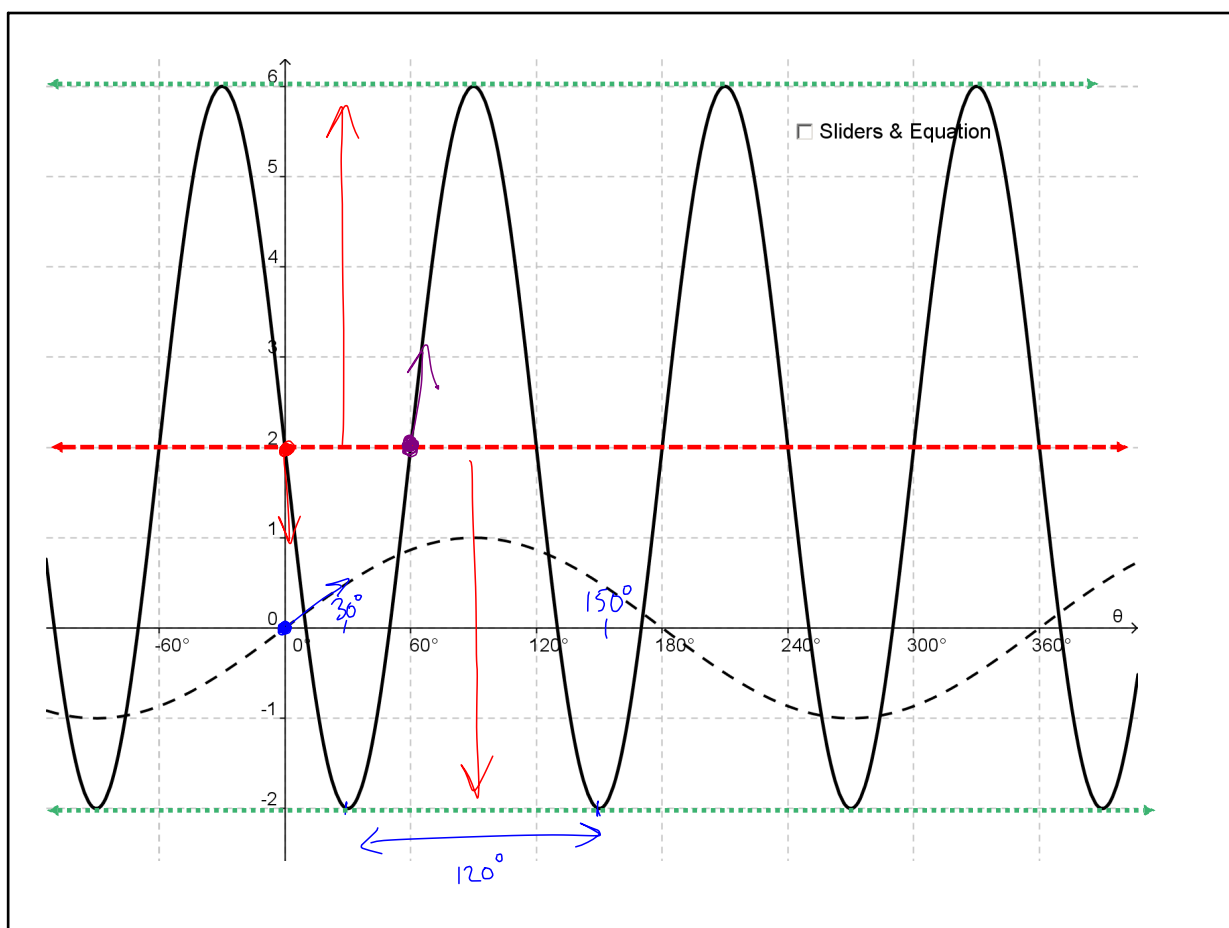
Determining Equations of Trigonometric Functions

1. Unless specified, choose sine or cosine as parent function.
2. Identify key properties of period and axis of the curve and use them to determine k and q .
*For simplicity, always choose k to be positive.
3. Identify key properties of amplitude and phase shift and use them to determine a and p .
These properties may vary depending on the parent function you have selected.

* Note: It is always possible, through choices of p (*phase shift*), to have a positive a -value and k -value.
4. Write the equation, remembering that multiple answers may correctly represent the same graph.

desmos.

May 17-9:17 AM



May 17-9:19 AM

① sine

② max \rightarrow max
min \rightarrow min

1. Sine or Cosine
2. Period, AofC
3. Amp & Phase
4. Equation

$$T = \frac{360^\circ}{k}$$

$$T = 120^\circ \quad k = \frac{360^\circ}{T}$$

$$k = 3 \rightarrow q = 2$$

AofC: $y = 2 \rightarrow q = 2$

③ amp = 4 $|a| = 4$ ④

phase shift 0° , v. reflect $\rightarrow a = -4$
 $p = 0^\circ$

phase shift $+60^\circ$, no reflect. $\rightarrow a = 4$
 $p = 60^\circ$

$$y = a \sin [k(x-p)] + q$$

$$y = -4 \sin [3x] + 2$$

$$y = 4 \sin [3(x-60^\circ)] + 2$$

May 17-9:19 AM

$p = -330^\circ$

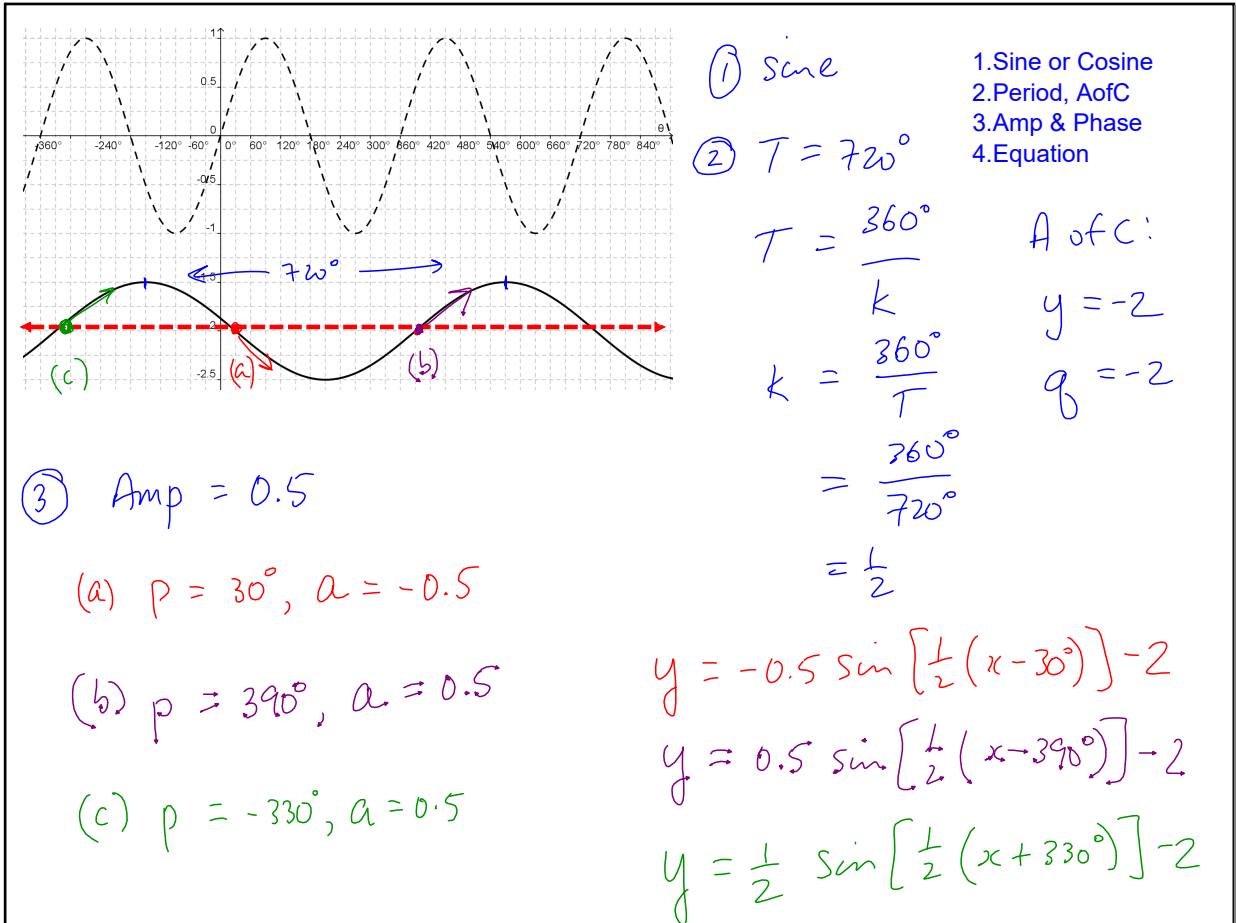
$p = 30^\circ$

$p = 390^\circ$

amp = 0.5

$$T = 720^\circ$$

May 17-10:44 PM



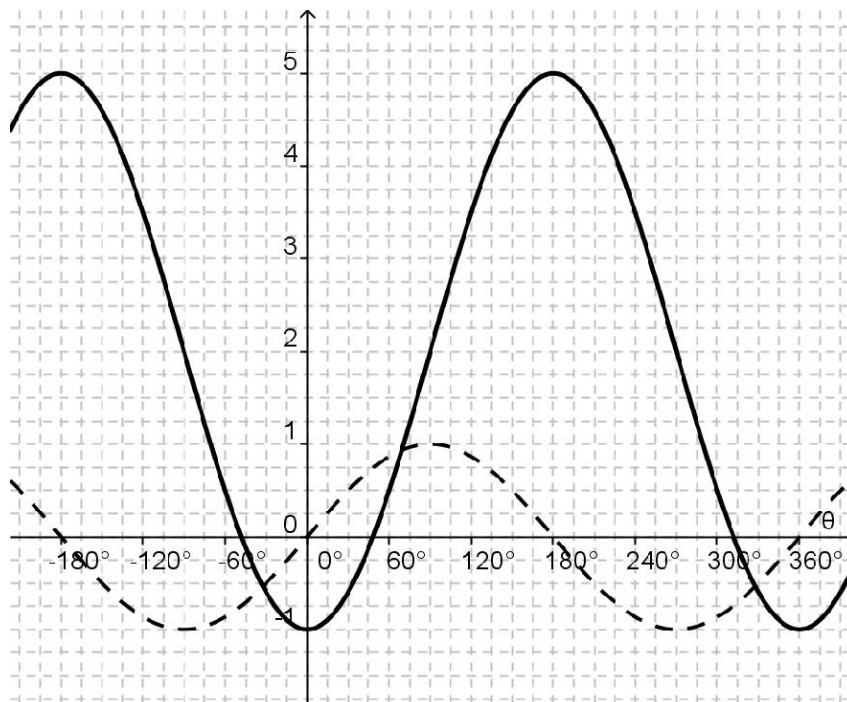
May 17-10:44 PM

Assigned Work:

p.375 # 7ab, 8b
worksheet

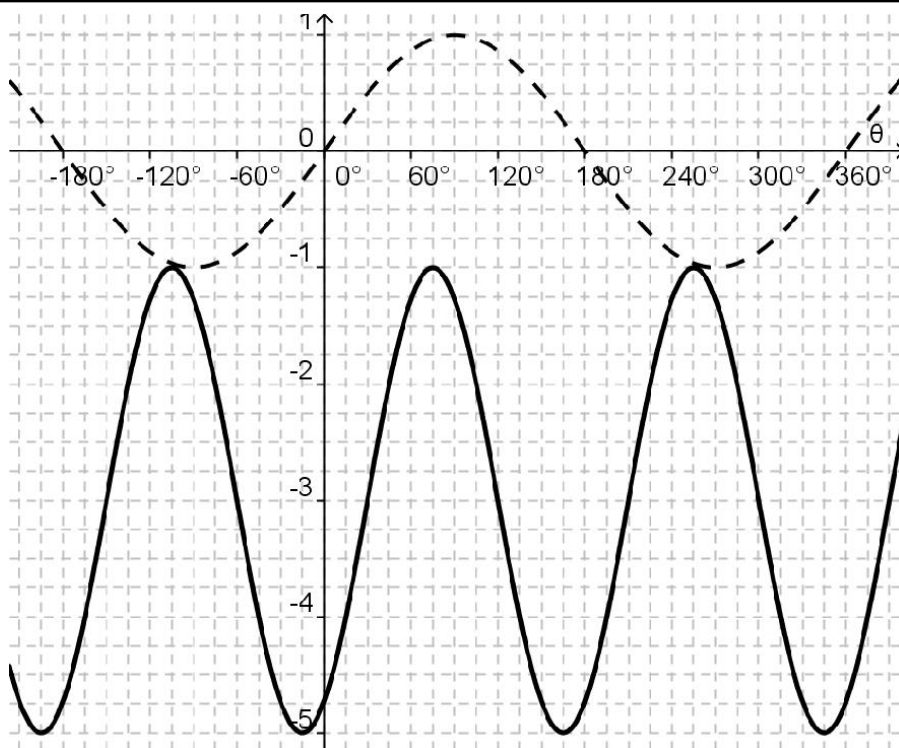
Dec 10-9:40 AM

WS.A



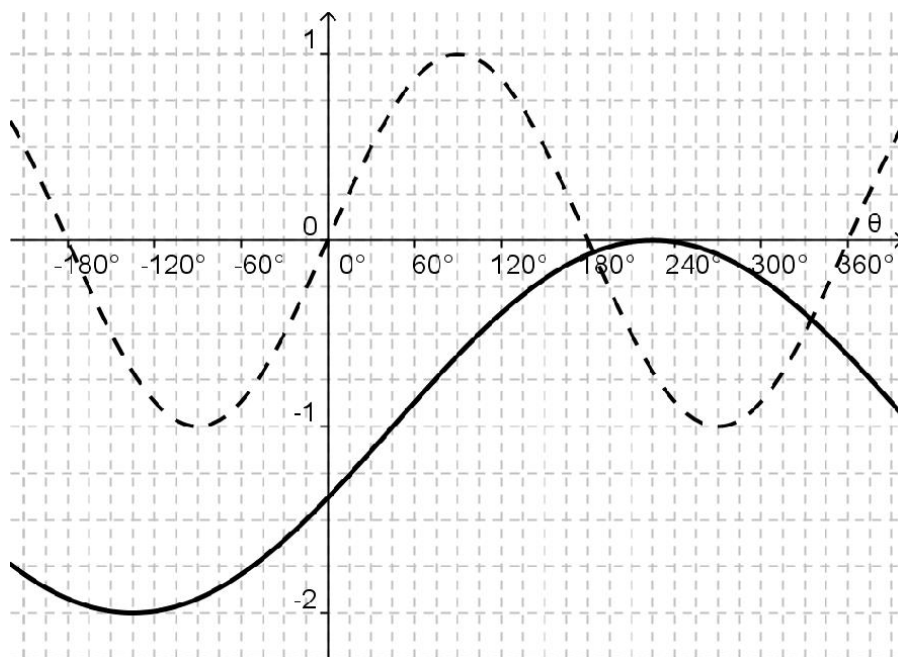
Dec 11-12:07 PM

WS.B



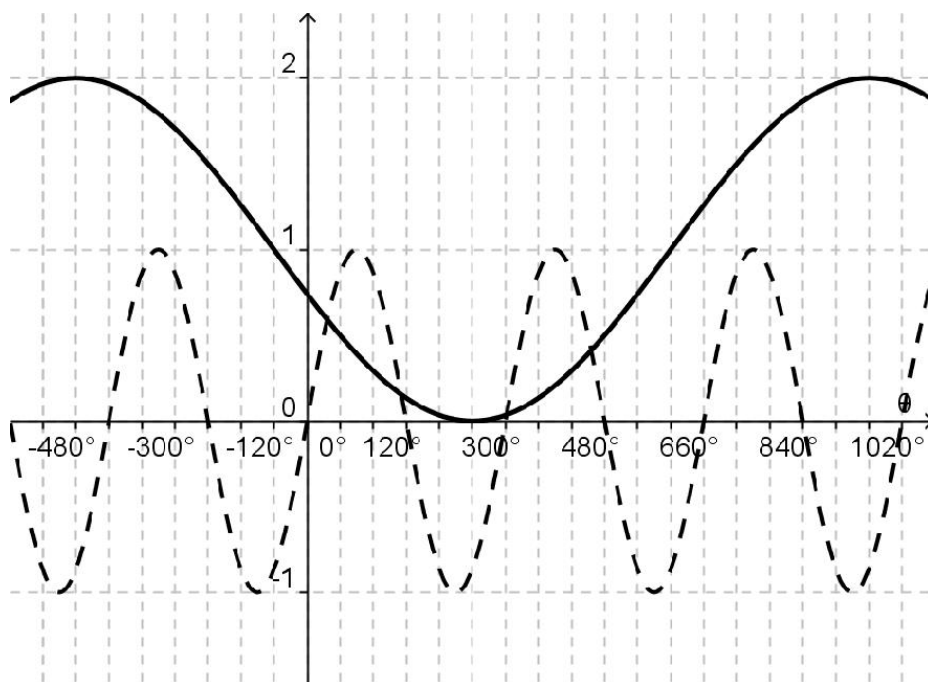
Dec 11-12:08 PM

WS.C



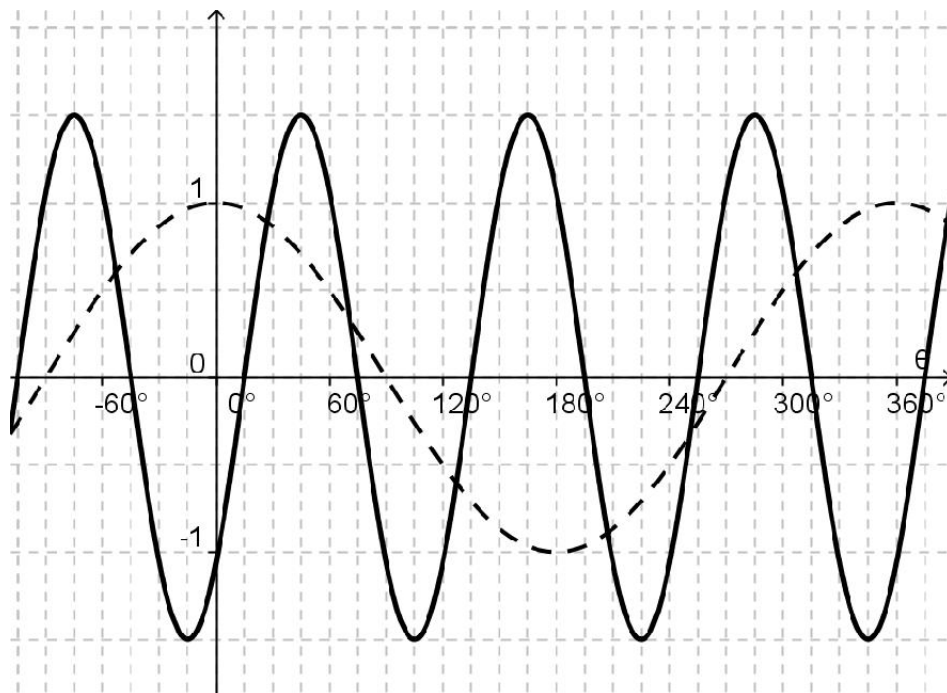
Dec 11-12:08 PM

WS.D



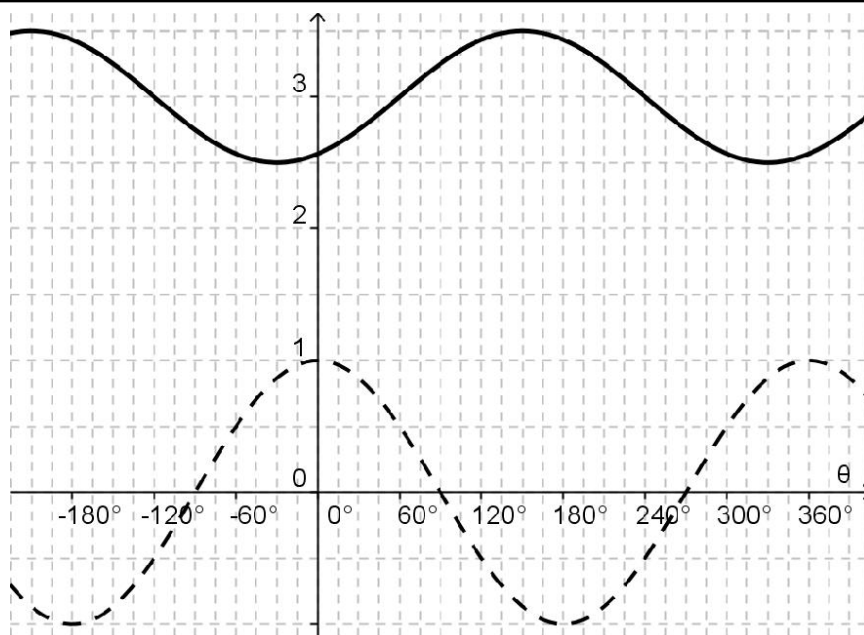
Dec 11-12:09 PM

WS.E



Dec 11-12:10 PM

WS.F



Dec 11-12:11 PM