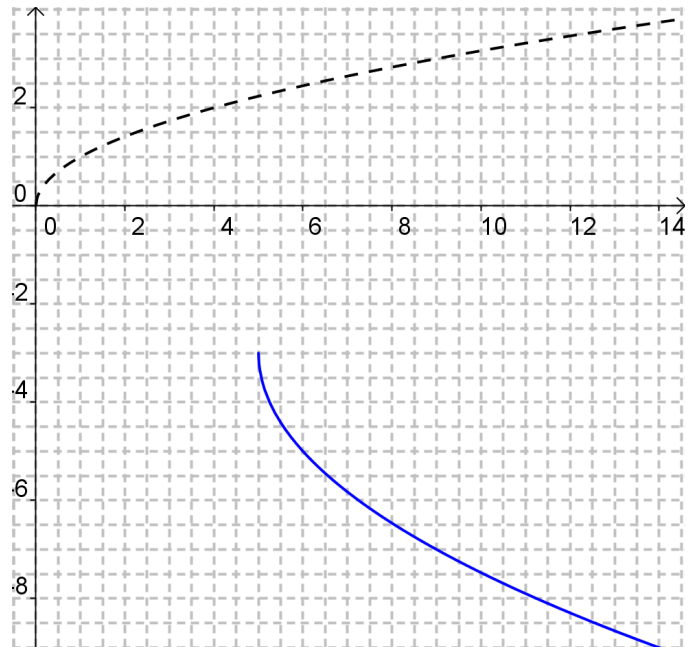
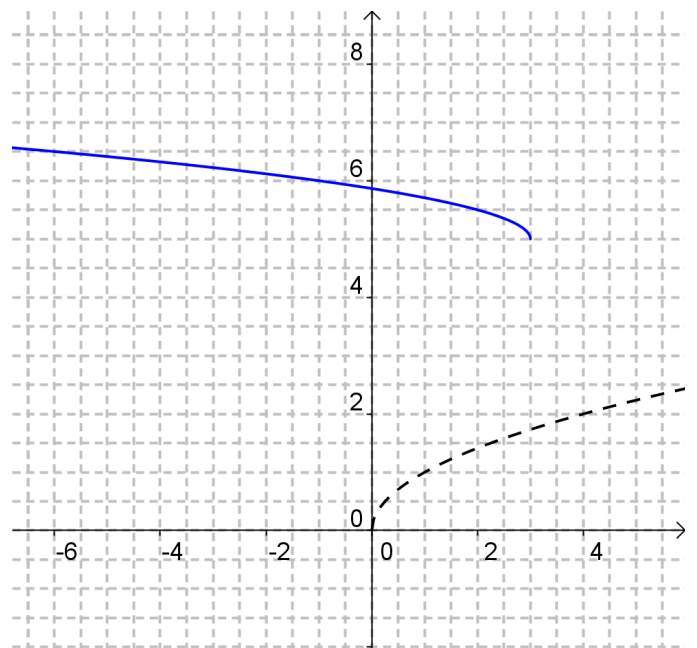


Ex.1 The diagram below shows a transformed radical function (solid) as well as the parent function (dotted). Determine the transformations involved and express the entire transformation using function notation.

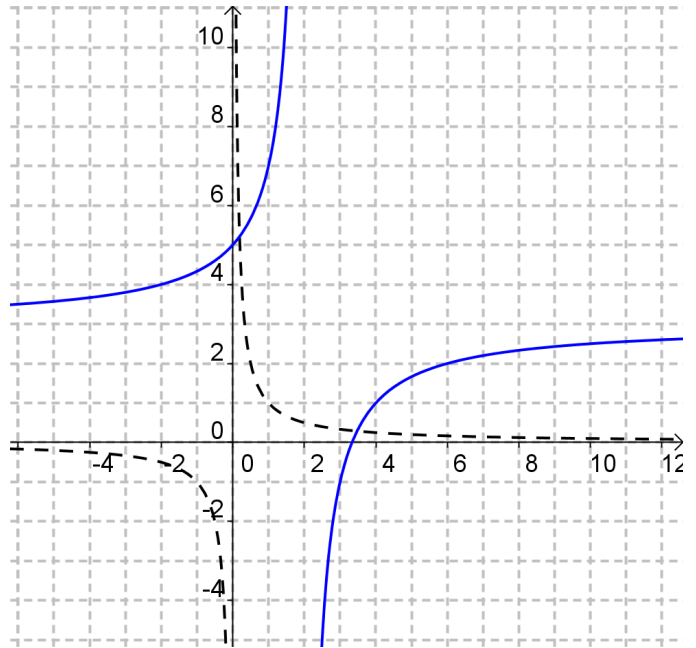


Ex.2 The diagram below shows a transformed radical function as well as the parent function (dotted). Determine the transformations involved and express the entire transformation using function notation.

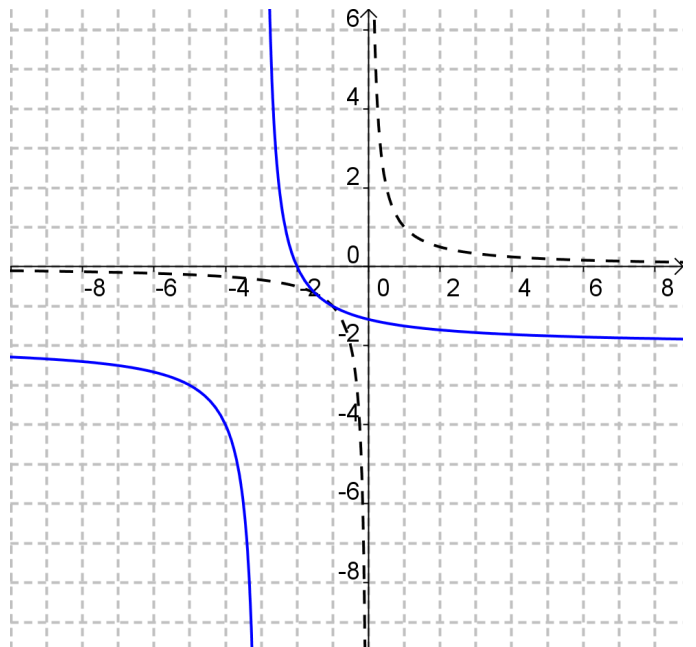


Oct 7, 2013

Ex.3 The diagram below shows a transformed reciprocal function as well as the parent function (dotted). Determine the transformations involved and express the entire transformation using function notation.

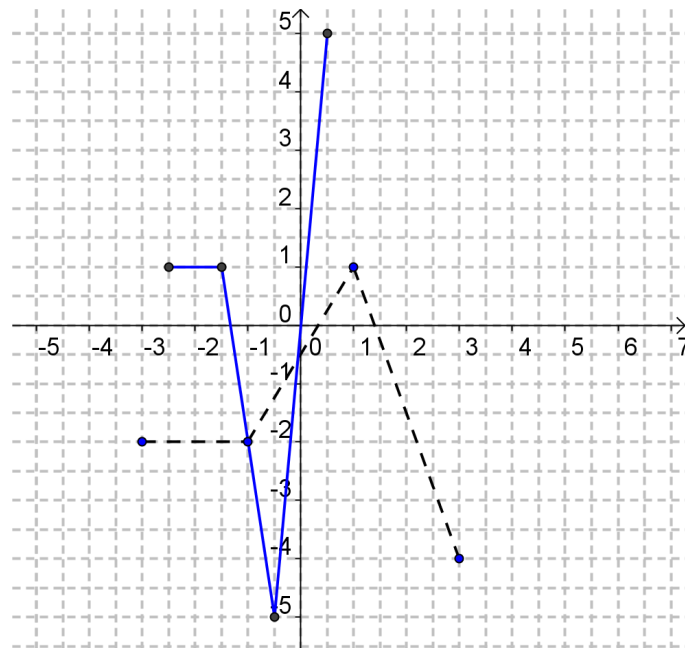


Ex.4 The diagram below shows a transformed reciprocal function as well as the parent function (dotted). Determine the transformations involved and express the entire transformation using function notation.

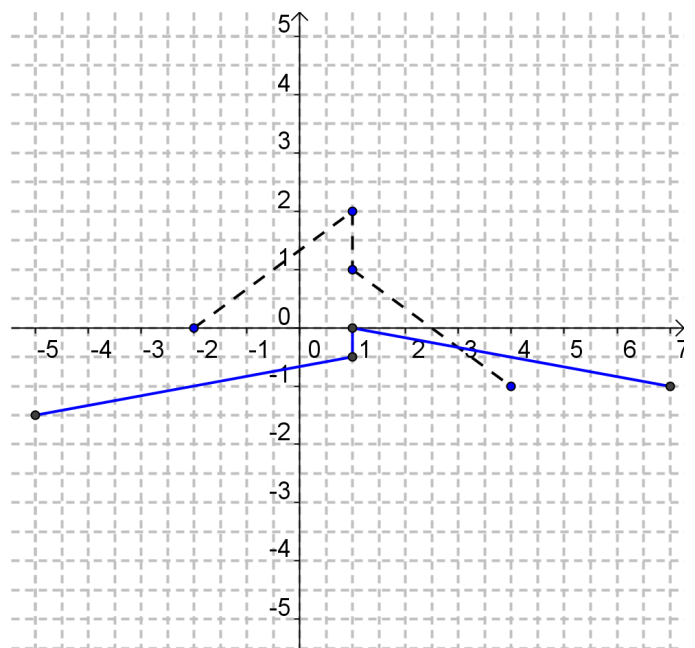


Oct 7, 2013

Ex.5 The diagram below shows a transformed piecewise function as well as the parent function (dotted). Determine the transformations involved and express the entire transformation using function notation.

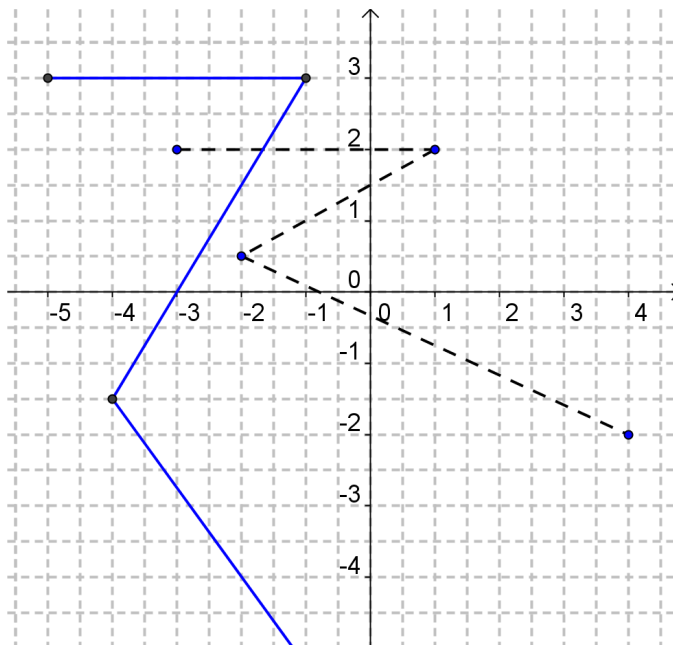


Ex.6 The diagram below shows a transformed piecewise function as well as the parent function (dotted). Determine the transformations involved and express the entire transformation using function notation.



Oct 7, 2013

Ex.7 The diagram below shows a transformed piecewise function as well as the parent function (dotted). Determine the transformations involved and express the entire transformation using function notation.



Ex.8 The diagram below shows a transformed piecewise function as well as the parent function (dotted). Determine the transformations involved and express the entire transformation using function notation.

