

Graphs of Reciprocal Trigonometric Functions

Handout: Graphs of Reciprocal Trig Functions

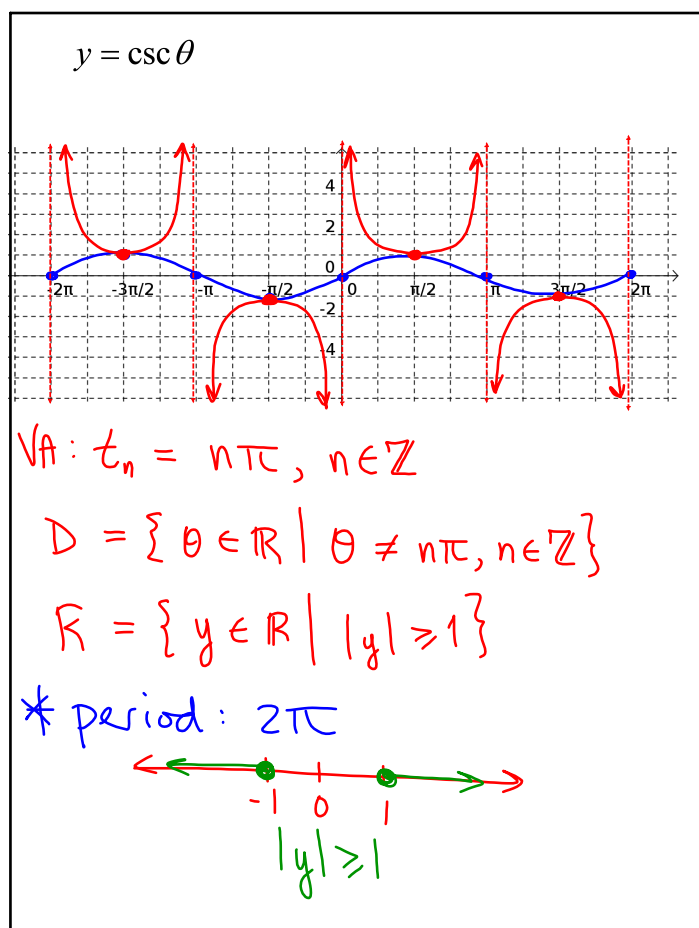
Recall:

$$\csc \theta = \frac{1}{\sin \theta} = \frac{r}{y}$$

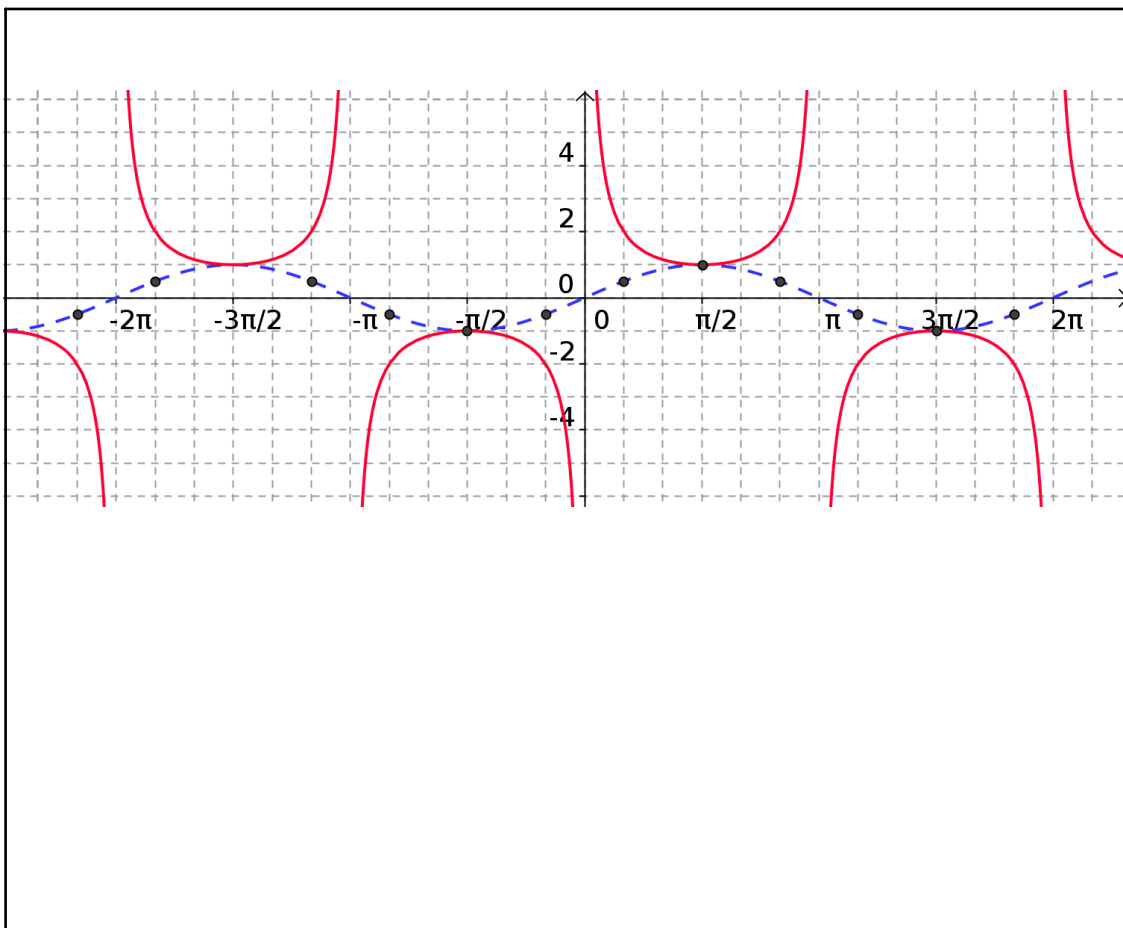
$$\sec \theta = \frac{1}{\cos \theta} = \frac{r}{x}$$

$$\cot \theta = \frac{1}{\tan \theta} = \frac{x}{y}$$

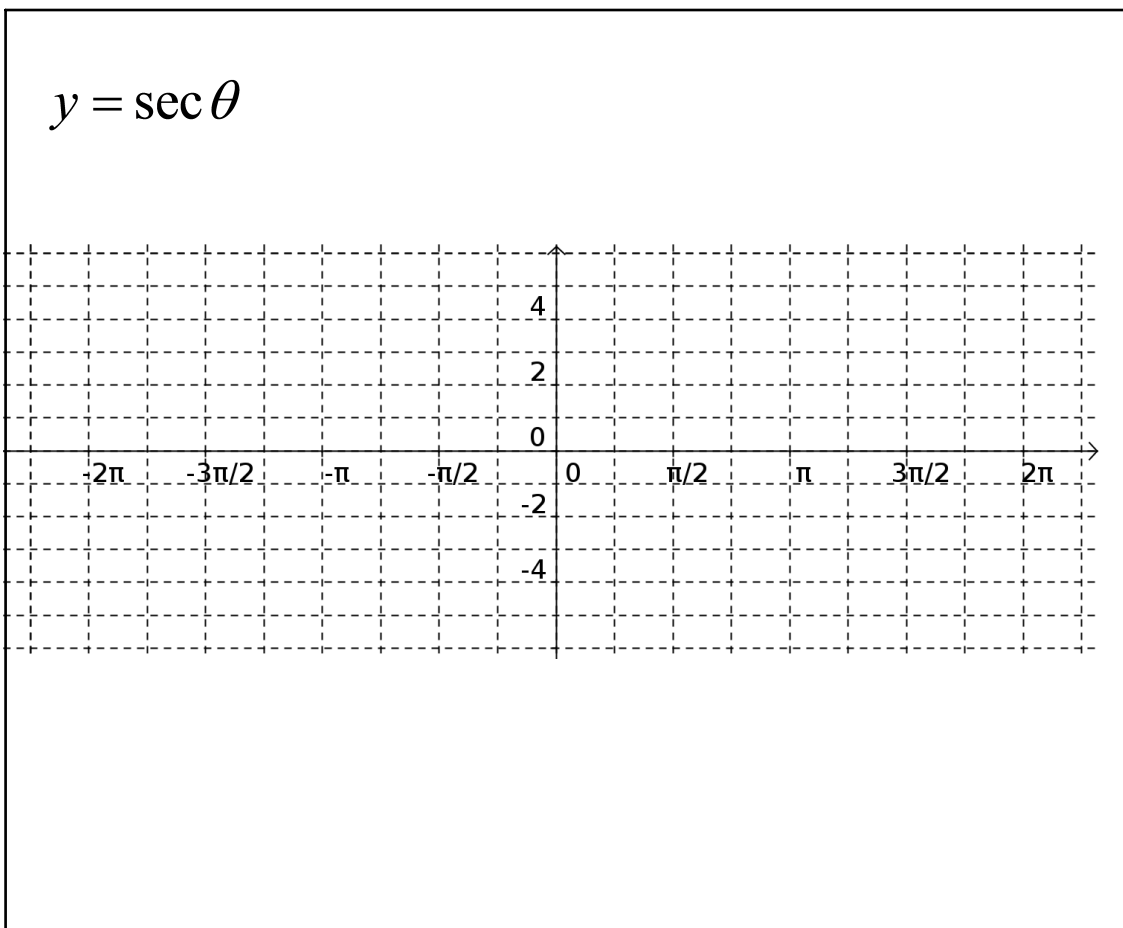
May 17-9:17 AM



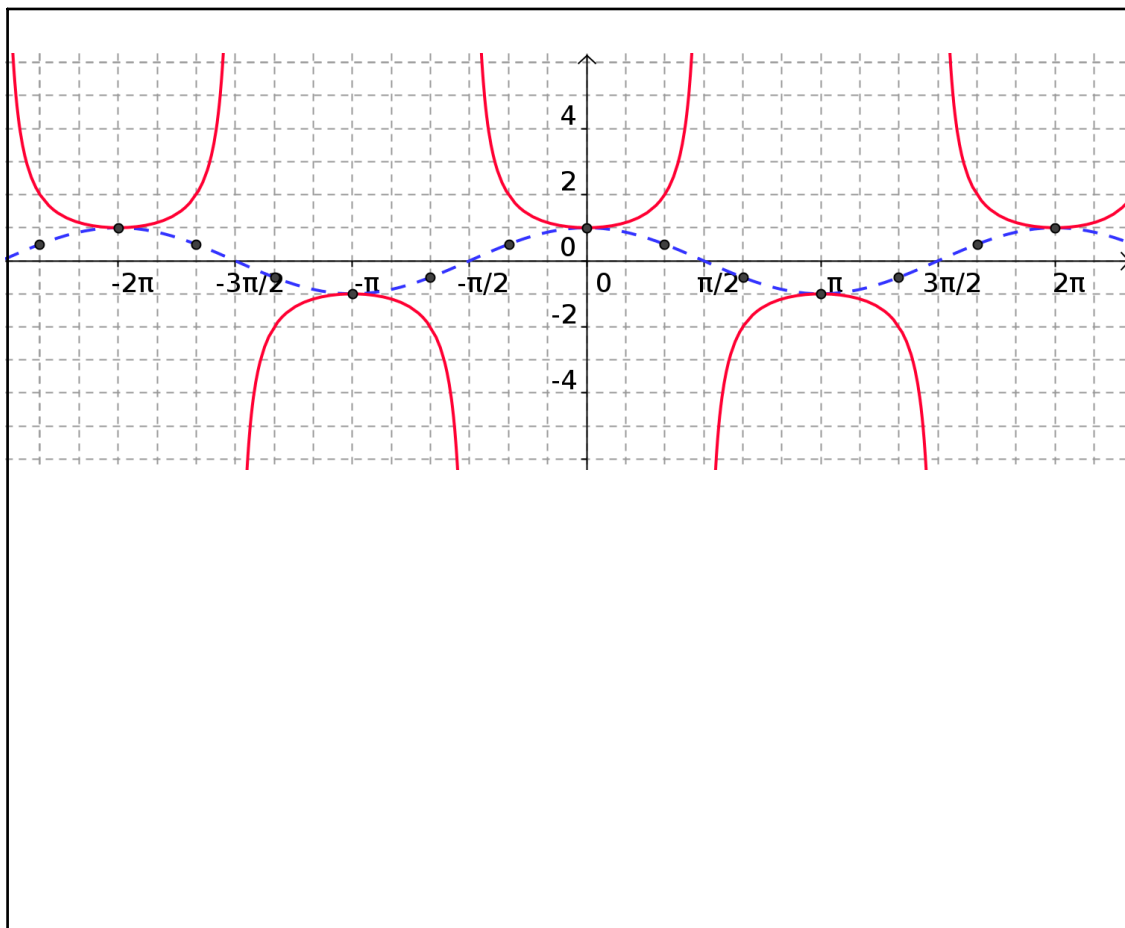
May 16-9:08 AM



Oct 30-9:25 PM

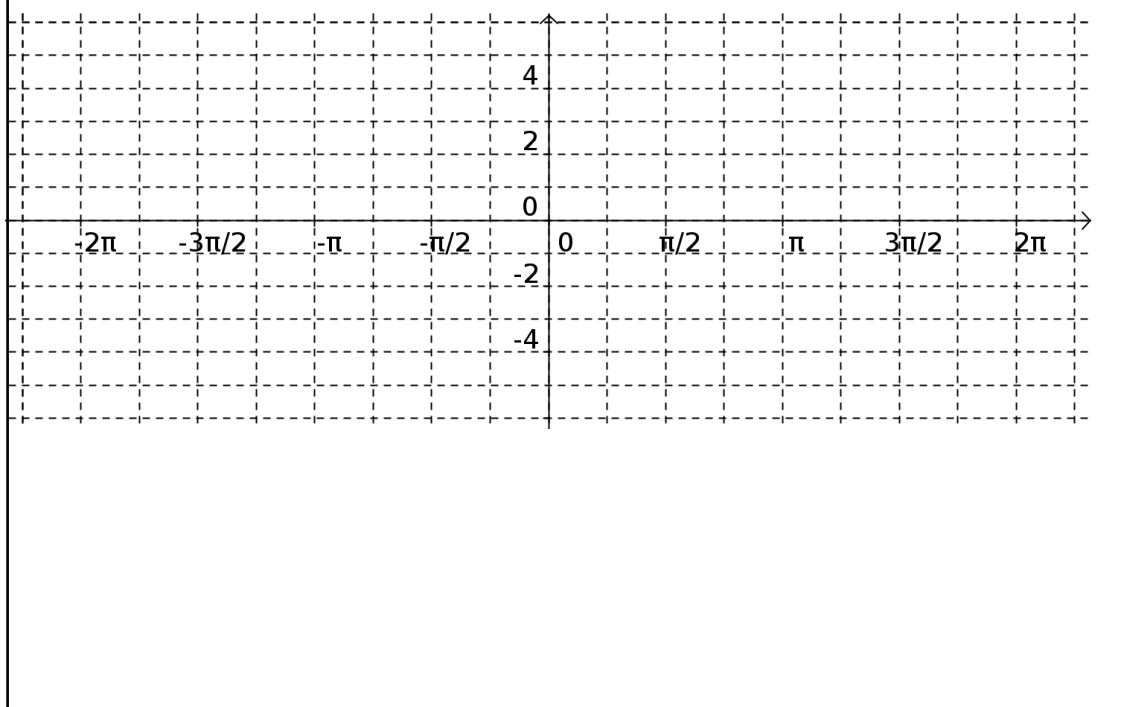


May 16-9:08 AM



Oct 30-9:33 PM

$$y = \cot \theta$$



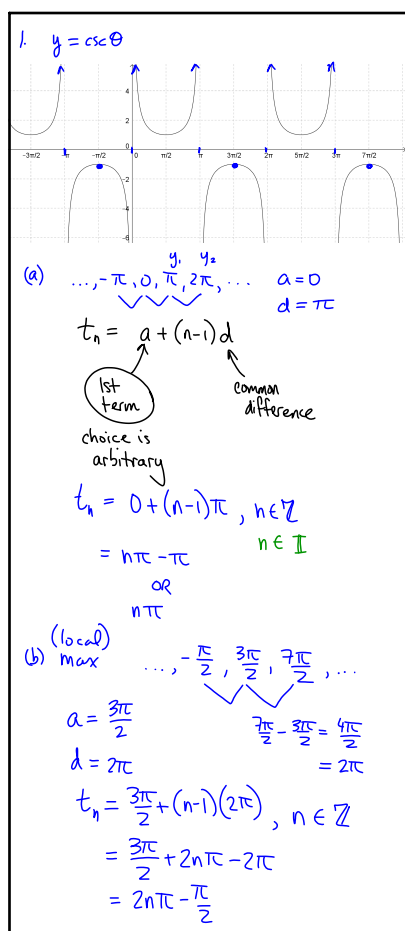
May 16-9:08 AM

Assigned Work:

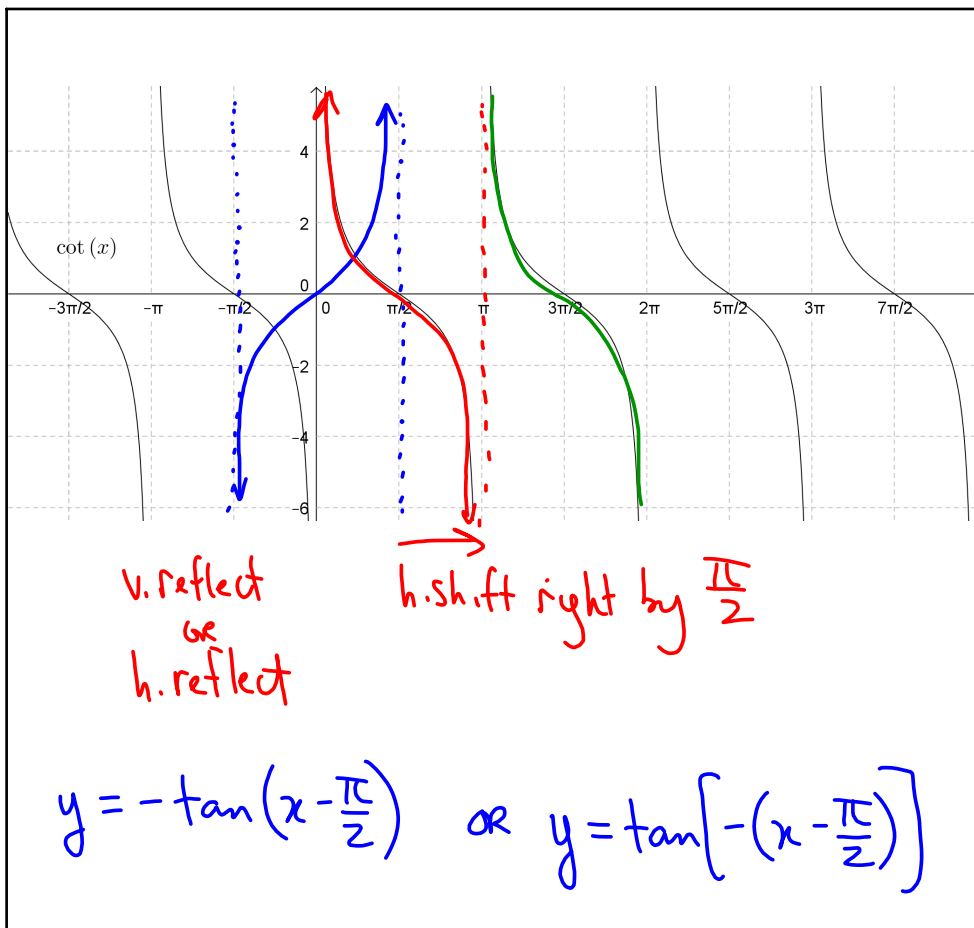
p.353 #1, 2, 3, 6, 7

d
c

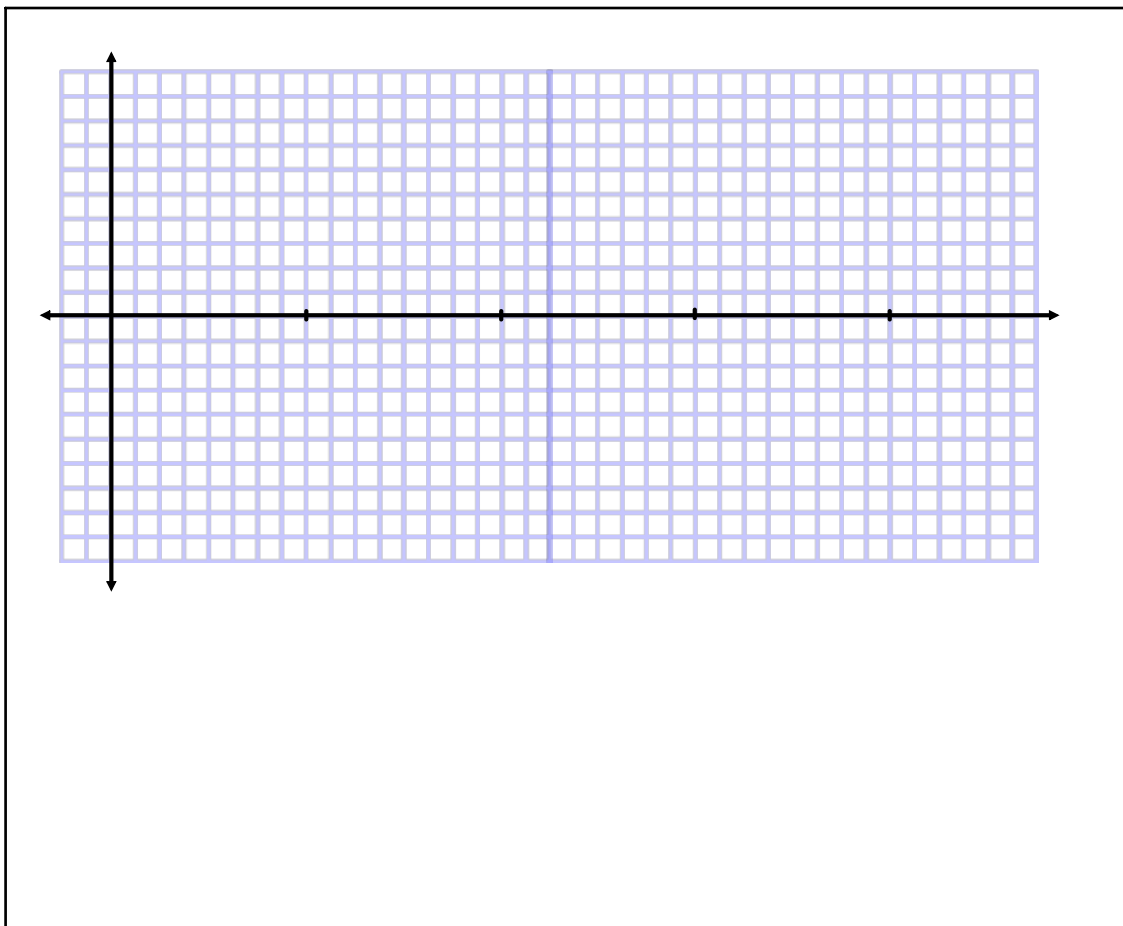
May 22-8:28 AM



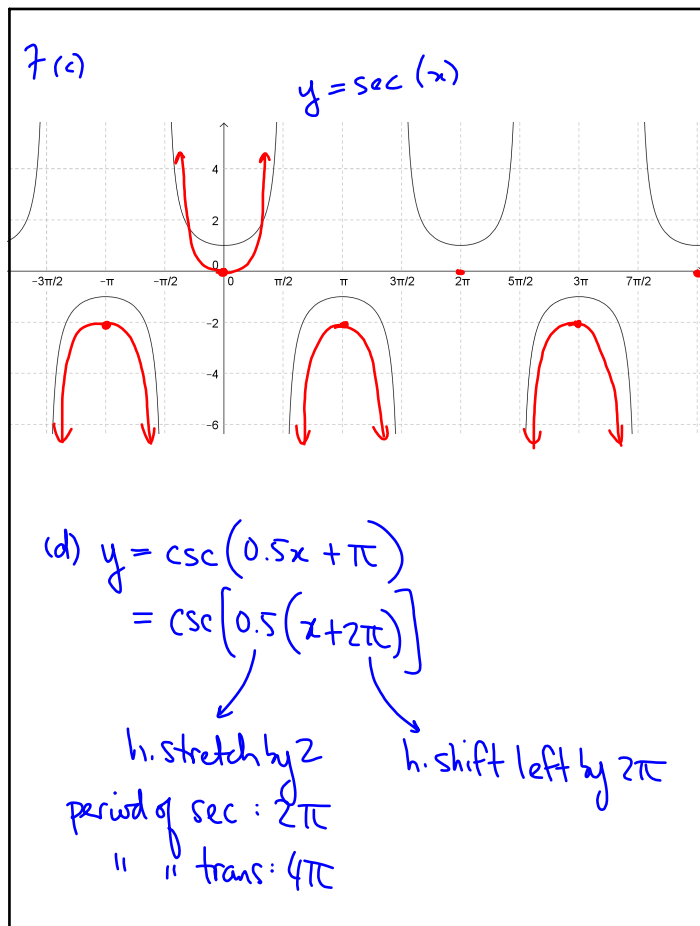
Nov 3-12:30 PM



Nov 3-12:32 PM



Oct 31-10:13 AM



Nov 3-12:31 PM